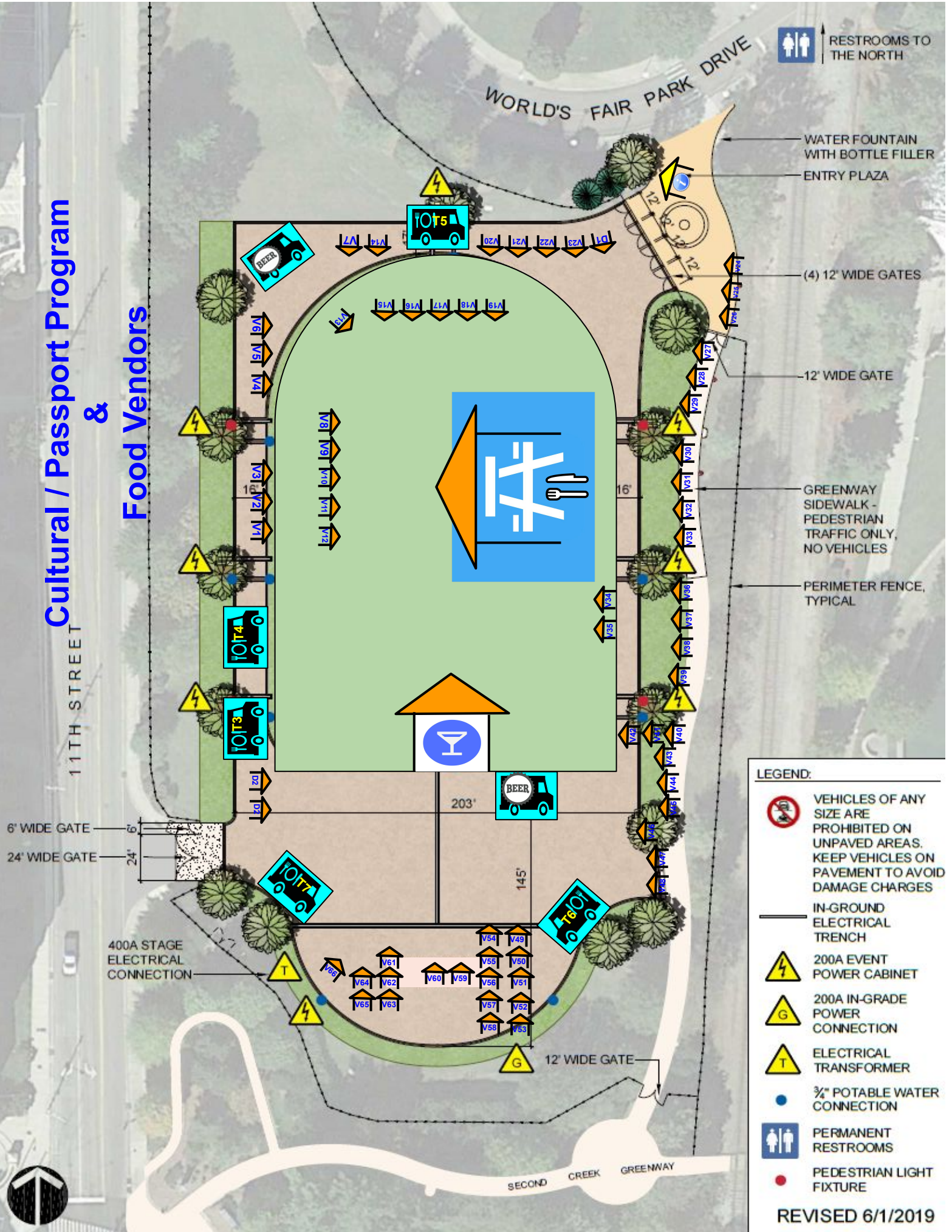


Cultural / Passport Program & Food Vendors



RESTROOMS TO THE NORTH

WATER FOUNTAIN WITH BOTTLE FILLER
ENTRY PLAZA

(4) 12' WIDE GATES

12' WIDE GATE

GREENWAY SIDEWALK - PEDESTRIAN TRAFFIC ONLY, NO VEHICLES

PERIMETER FENCE, TYPICAL

LEGEND:

- VEHICLES OF ANY SIZE ARE PROHIBITED ON UNPAVED AREAS. KEEP VEHICLES ON PAVEMENT TO AVOID DAMAGE CHARGES
- IN-GROUND ELECTRICAL TRENCH
- 200A EVENT POWER CABINET
- 200A IN-GRADE POWER CONNECTION
- ELECTRICAL TRANSFORMER
- 3/4" POTABLE WATER CONNECTION
- PERMANENT RESTROOMS
- PEDESTRIAN LIGHT FIXTURE

REVISED 6/1/2019